

VERSA **BUILT**
ROBOTICS

ROBOT2CNC

BASIC EDITION
UNIVERSAL ROBOTS
HAAS NGC

INSTALLATION AND OPERATION



TABLE OF CONTENTS

SECTION

- 1 Safety Warnings
- 2 How it Works
- 3 In the Box
- 4 Installation Steps
- 5 Programming with the Robot2CNC
- 6 Robot2CNC Commands

- APPENDIX A Troubleshooting
- APPENDIX B Robot2CNC Web Configuration Interface
- APPENDIX C Advanced Network Configuration

SECTION 1

SAFETY WARNINGS

DANGER

The Robot2CNC is an industrial control product designed to be operated by trained personnel only. The Robot2CNC is capable of starting the CNC, actuating clamping devices, and making changes to the CNC's operating parameters.

Before deploying the Robot2CNC, a safety risk assessment must be completed in accordance with local, state, and/or federal requirements. When using the Robot2CNC all CNC safety interlocks must be maintained. Additional safety measures may be required to ensure the Robot2CNC device does not create a safety hazard when deployed.

The Robot2CNC should only be used by trained operators

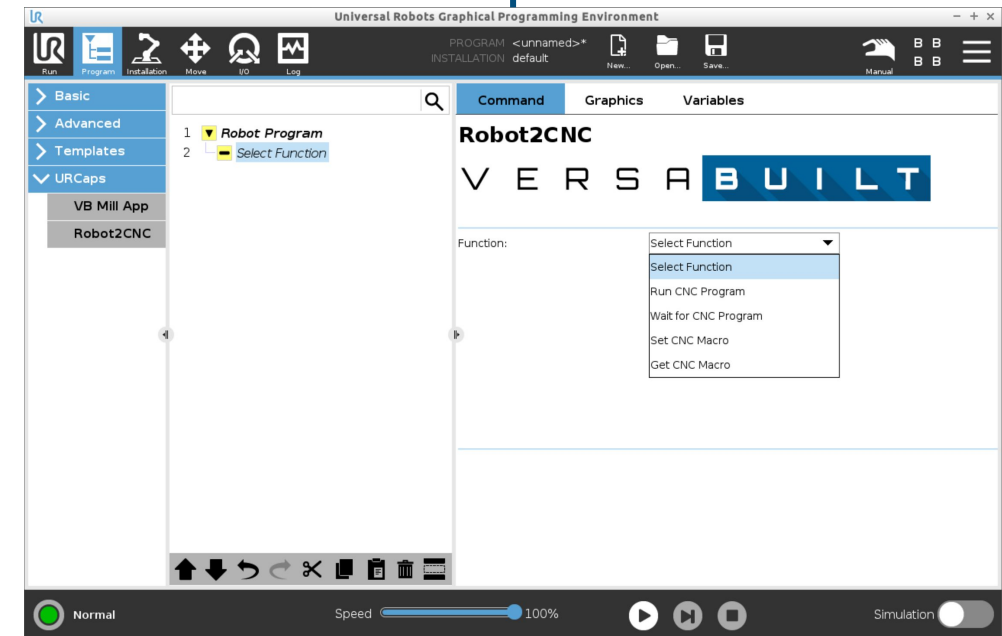
SECTION 2

HOW IT WORKS

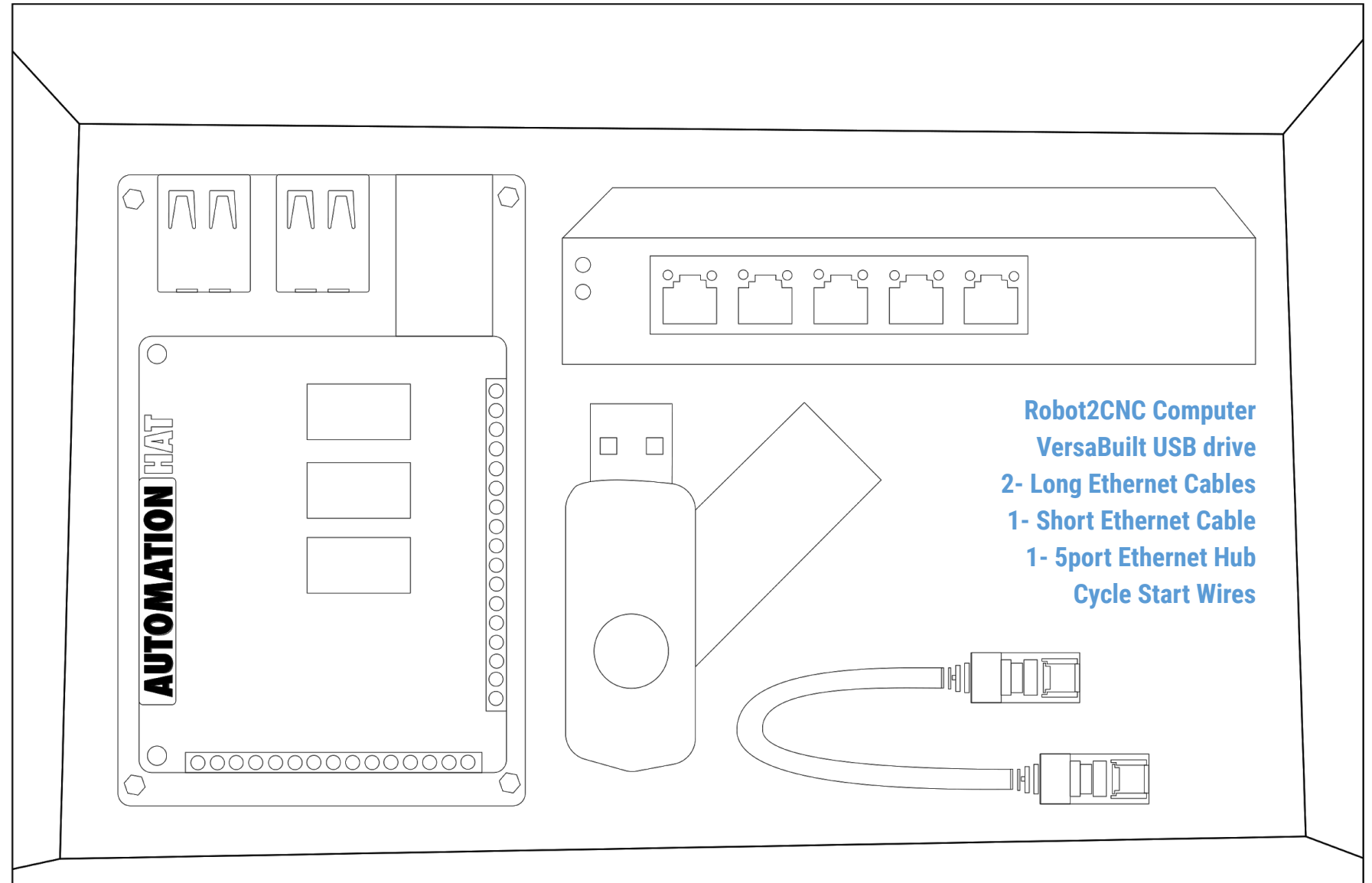
Robot2CNC communicates with the **Haas CNC** using the Haas Machine Data Collection protocol. Machine Data Collection protocol allows the Robot2CNC to **read** and **write** macro variables **on the CNC**. Values in the macro variables are used to **communicate information** and commands **between the Robot** and the **CNC machine**. When used with the provided **VersaBuilt CNC programs**, the Robot2CNC allows the robot to select and run any program stored on the CNC and be notified when the **program completes**.

In the Robot2CNC Basic Edition, the following commands are available:

- 1 Run CNC Program
(CNC Program Number)
- 2 Wait for CNC Program
- 3 Set CNC Macro Variable
- 4 Get CNC Macro Variable



SECTION IN THE BOX



SECTION

INSTALLATION STEPS

4. Install Cycle Start Wires to CNC

Tools Needed

Phillips Head Screwdriver

M4 Allen Wrench

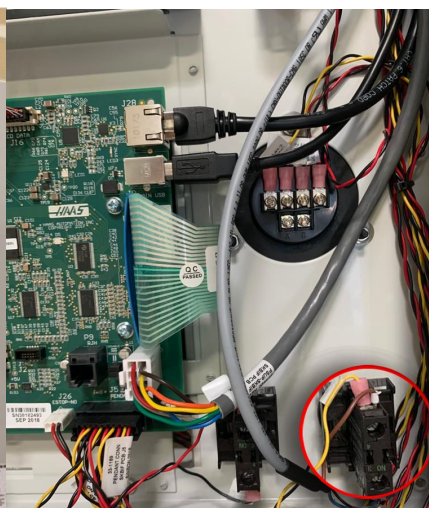
Flat Head Screwdriver

- Make sure CNC is **powered off** at main breaker, lock-out-tag-out
- Rotate Hass Control Panel to **show back of panel**
- Remove the back cover panel on the Hass Control Panel by **unscrewing the 4 fastener with a screwdriver** or Allen Wrench
- Locate the **Cycle Start Button in the lower right hand corner** of the panel
- Connect the **two wires from the cycle start wire kit** to the terminals **on the button**. Polarity does not matter. Either wire can go to either terminal.
- Route the cycle start wires **through the cable pass through hole** on the Hass Control Panel
- Route the cable to the **Robot2CNC**
- Put back **sheet metal cover panel** and **fasten the 4 screws** with a screwdriver or Allen Wrench

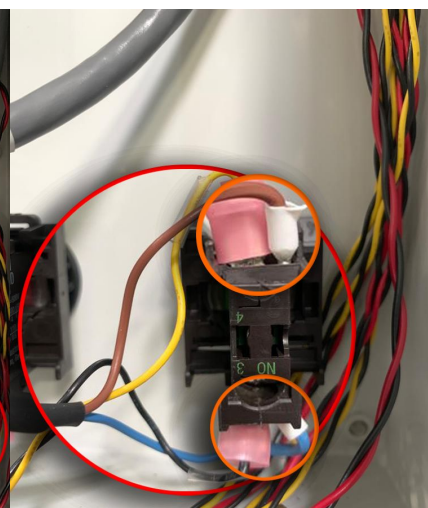
*note: some hardware may vary depending on CNC model and Year



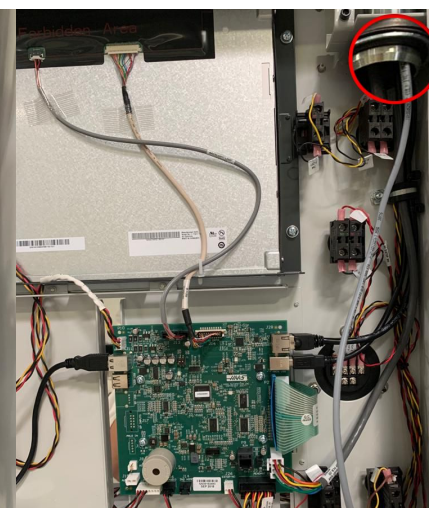
4 Fastener



Cycle Start Button



Cycle Start Wires Connection



Routing Cycle Start Wires

SECTION

INSTALLATION STEPS

Mount Robot2CNC Computer
in CNC Cabinet

4.2

- Turn-off power at the breaker to the CNC
- Open CNC cabinet door
- Place Robot2CNC in the CNC cabinet away from exposed electrical wires
- Optionally bond Robot2CNC and Network Hub with included double-sided tape
- Connect power supplies to Robot2CNC and Network Hub
- Connect 1-foot long Ethernet cable between Robot2CNC and Network switch



SECTION

INSTALLATION STEPS

4

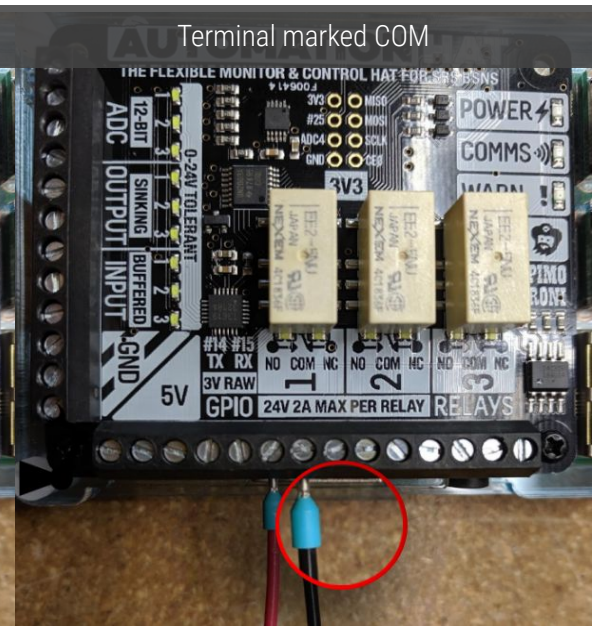
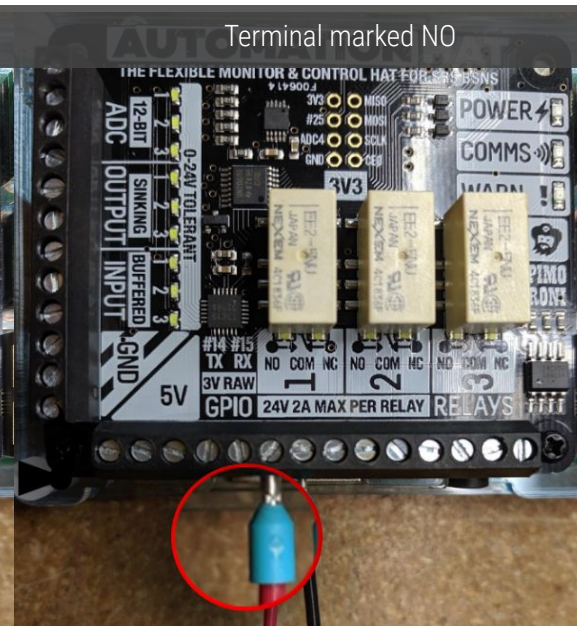
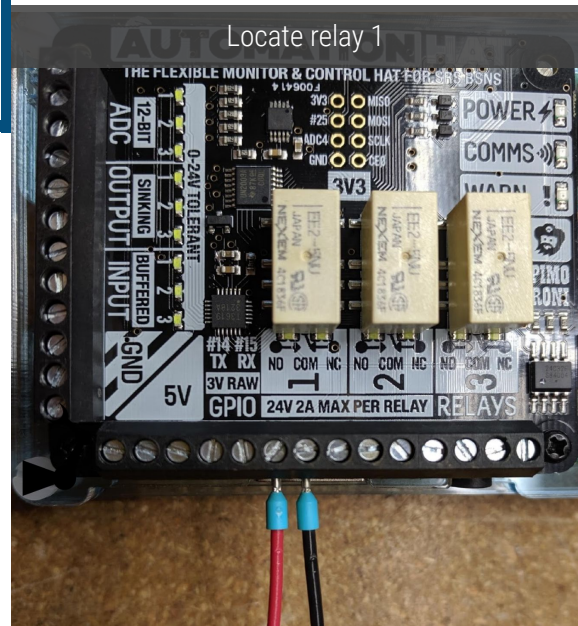
Connect Cycle Start Wires

to Robot2CNC

Tools Needed

1/16" Flathead Screwdriver

- Route wires down to the Robot2CNC
- Locate relay 1 on the Robot2CNC
- Using the screwdriver, loosen the terminal marked NO and connect the red wire and tighten it down
- Repeat the process for the black wire in the terminal marked COM



SECTION

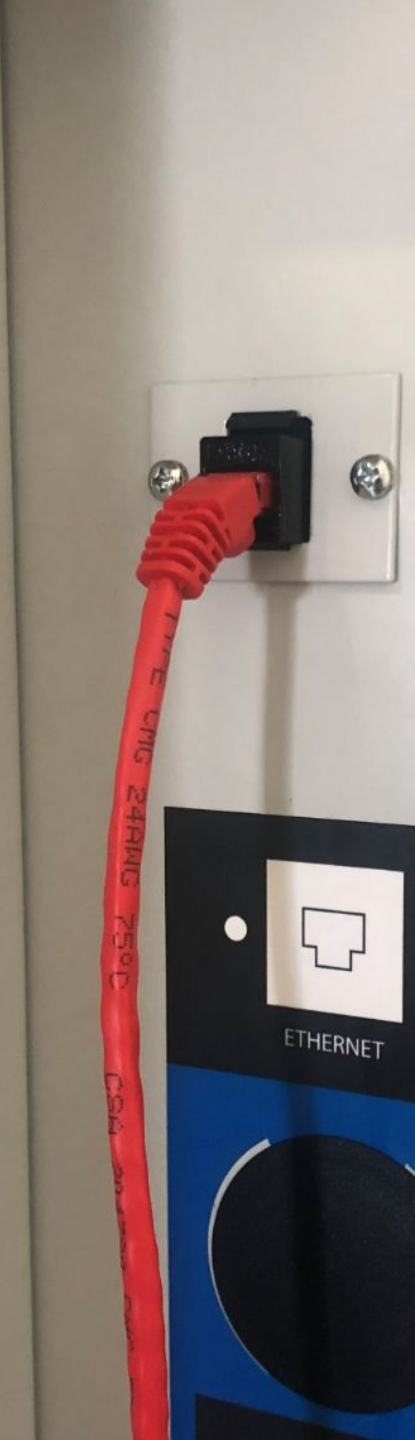
INSTALLATION STEPS

Connect Ethernet Cable Between
Robot and Robot2CNC

4.

4.

- Plug one end of a Long Ethernet cable into an available port on the 5-port switch
- Route the Ethernet cable out of the CNC cabinet and up to the Ethernet port on the side of the CNC cabinet
- Plug the Ethernet cable into the Ethernet port of the CNC



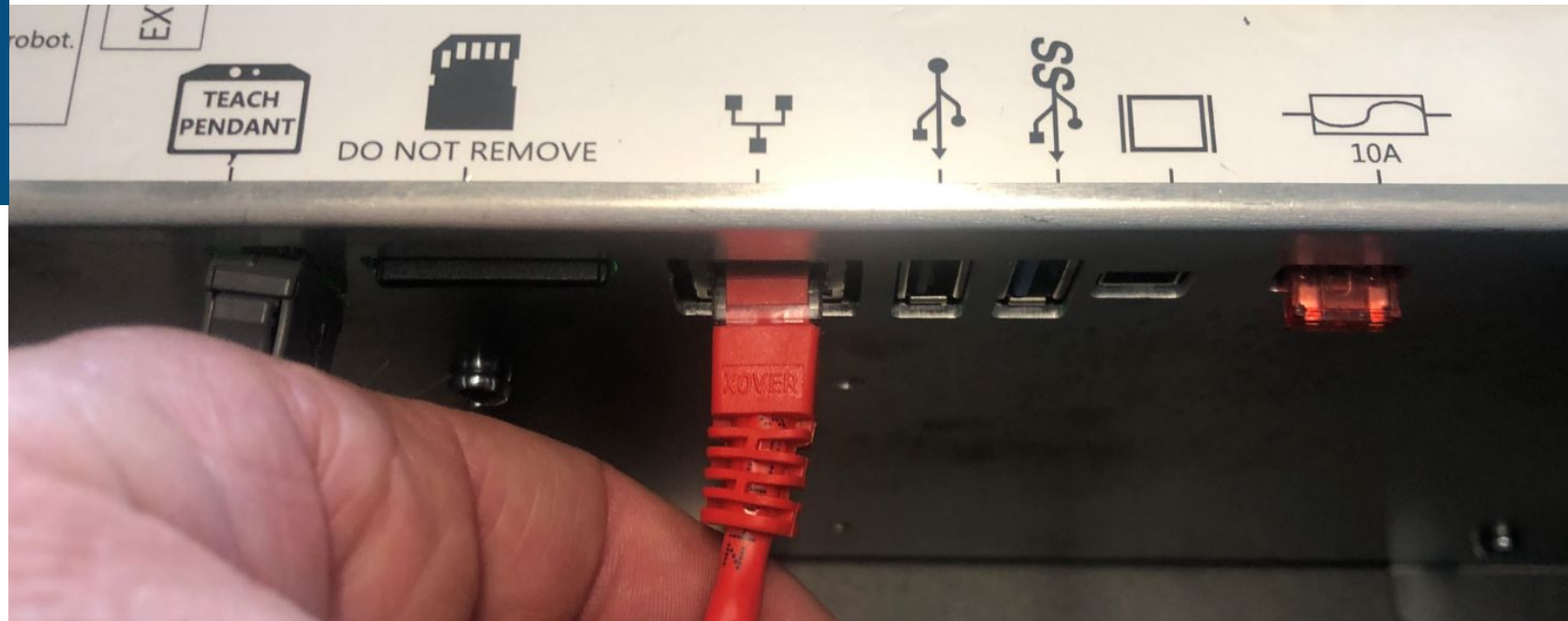
SECTION

INSTALLATION STEPS

4.5

Connect Ethernet Cable Between
Robot and Robot2CNC

- Lay the UR controller on it's back, remove a round access hole plug from the bottom of the controller
- Route one end of the Ethernet cable through the access hole and into the UR Controller
- Plug the Ethernet cable into the Ethernet port of the UR controller
- Route the other end of the Ethernet cable into the CNC cabinet
- Plug the Ethernet cable into one of the available ports on the 5-port switch



SECTION

12346

INSTALLATION STEPS

Configure CNC Settings

Change the following CNC settings:

- Wired Network Enabled

On
- Obtain Address Automatically

Off
- IP Address

192.168.2.3
- Subnet Mask

255.255.255.0

Change the following CNC settings on the Settings tab:

- 143 Machine Data Collection

9000

Settings						
Settings	Network	Rotary	User Positions	Alias Codes		
Wired Connection		Wireless Connection		Net Share		Haas Connect
Wired Network Information						
Host Name	HaasCNC1234567		DHCP Server	*		
Domain			IP Address	192.168.2.3		
DNS Server			Subnet Mask	255.255.255.0		
Mac Address	00:C0:08:88:47:7A		Gateway	*		
DHCP Enabled	OFF		Status	UP		

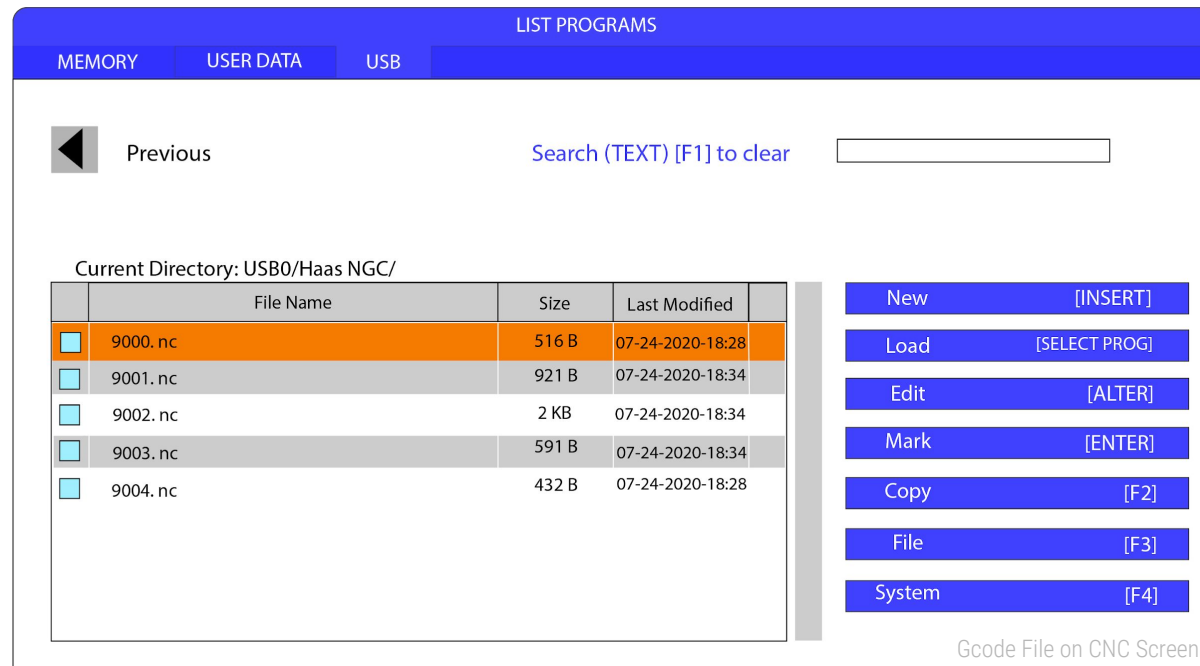
CNC settings Screen

SECTION 4

INSTALLATION STEPS

Install VersaBuilt Gcode Settings

- Insert VersaBuilt USB drive into Haas USB port
- Navigate to the Haas NGC directory on the VersaBuilt USB drive
- Copy the 9000.NC and the 9004.NC programs onto the Haas CNC control

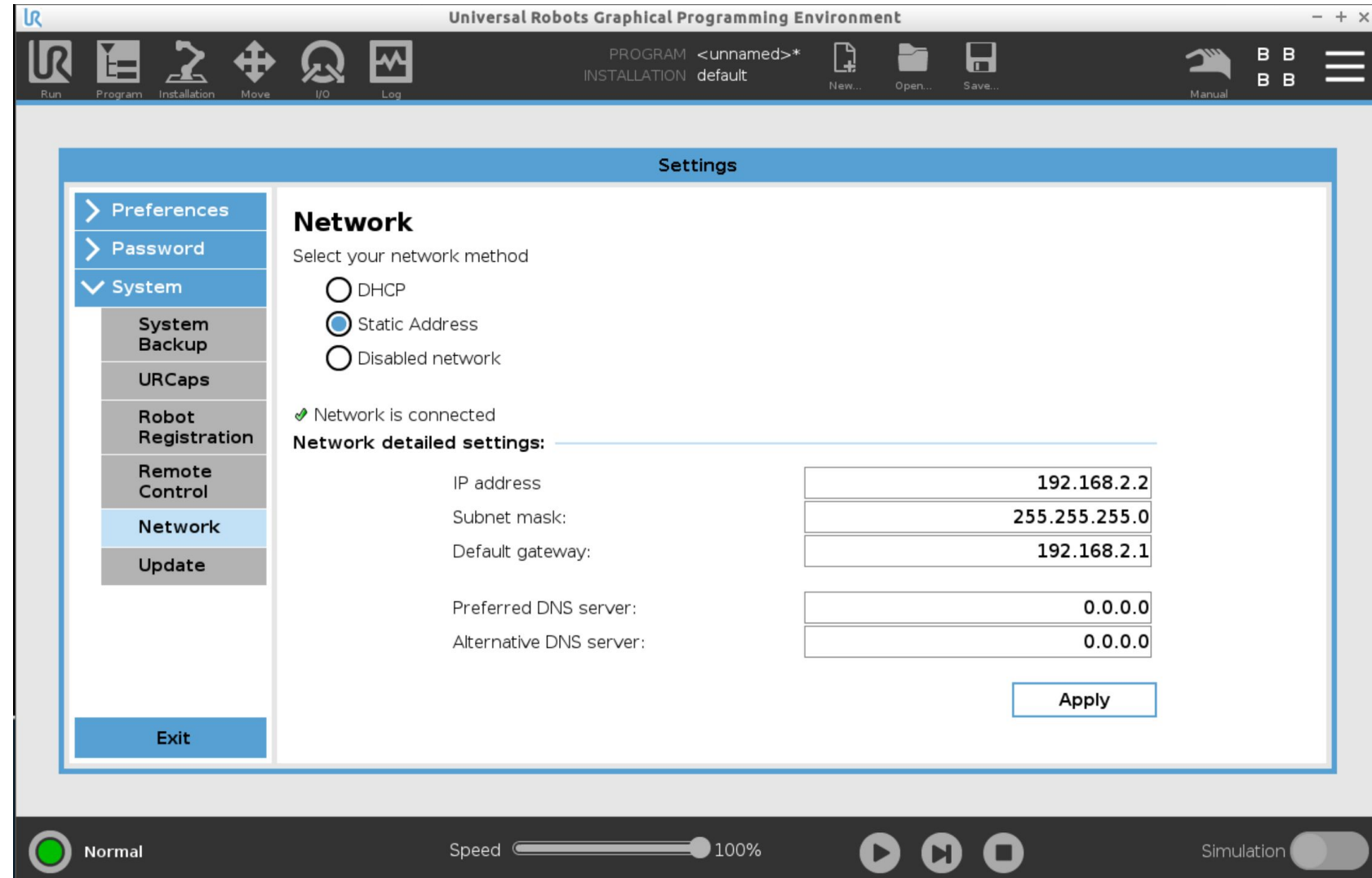


SECTION 4.8

INSTALLATION STEPS

Configure UR Robot Settings

- Click on the 3 horizontal bars in the upper right-hand corner of the UR teach pendant and select **Settings**
- On the Settings page, select **System** ➤ **Network**
- Select **Static Address**
- Enter the network detailed settings as shown

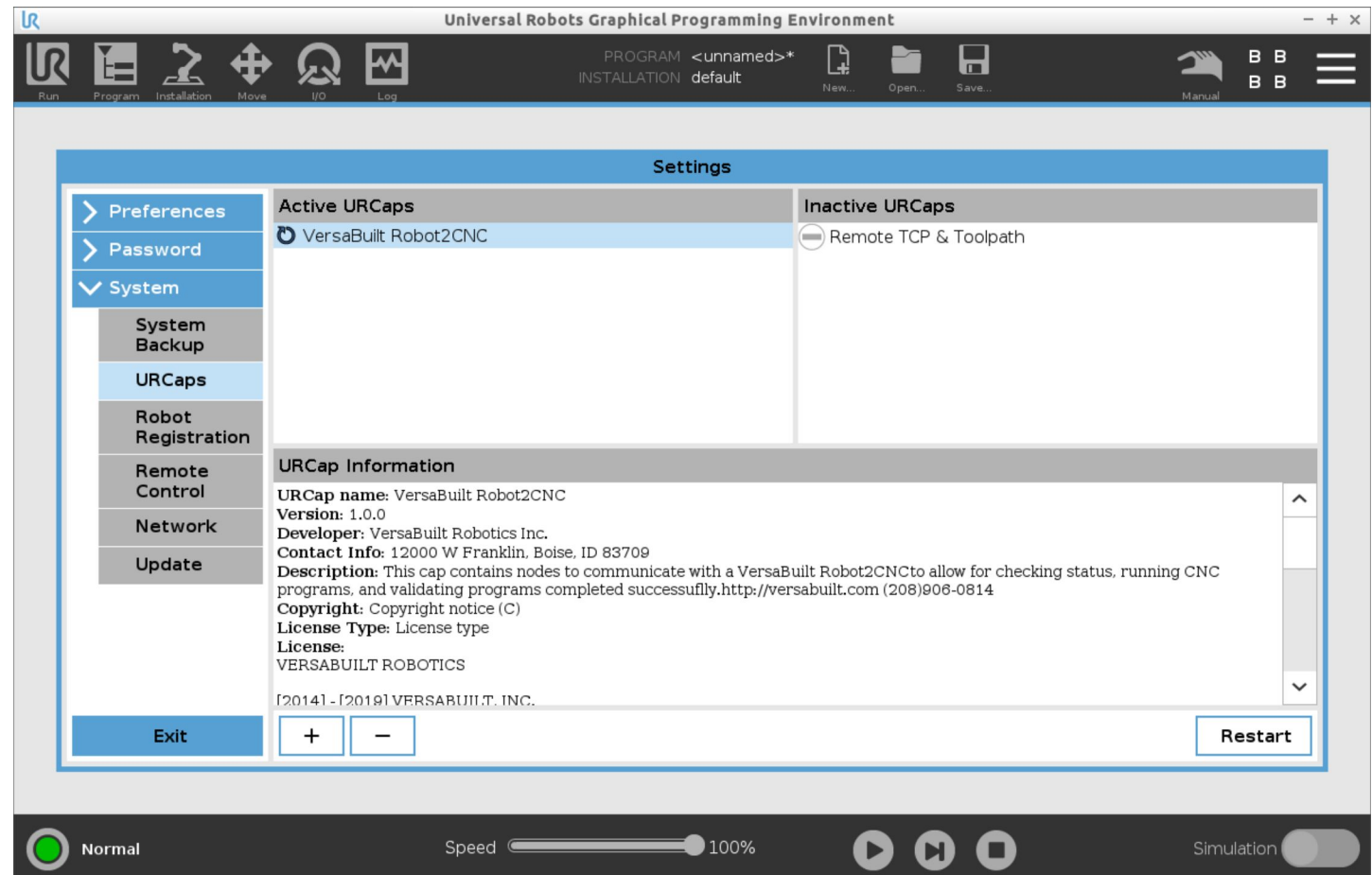


SECTION 4.2

INSTALLATION STEPS

Install UR Robot Software

- Insert the VersaBuilt USB drive into the UR Teach Pendant
- Click on the 3 horizontal bars in the upper right-hand corner of the UR Teach Pendant and select **Settings**
- On the **Settings** page, select **System** ➤ **URCaps**
- Press the **+** button in the lower left of the **Settings** page to **add a URCap**
- Navigate to the usbdisk and select the **robot2cnc-.2.0.urcap** file **note: file name may be different on USB drive*
- Press the **Restart** button in the lower right corner of the **Settings** page

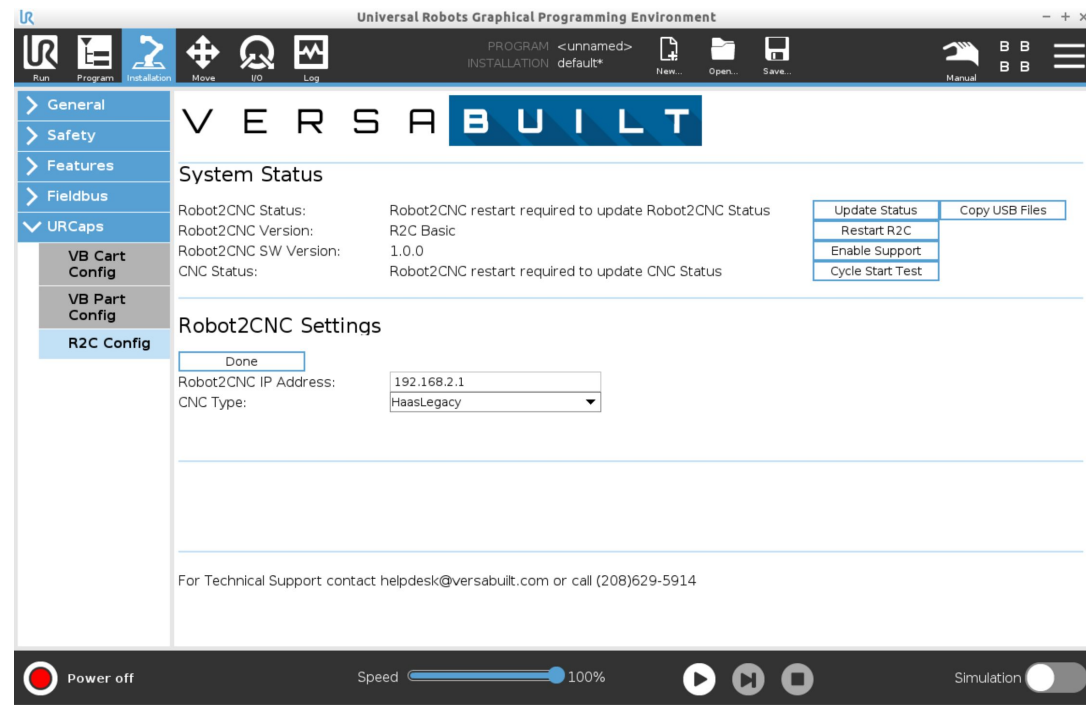


SECTION 4.10

INSTALLATION STEPS

Install Script File and Validate
Robot2CNC

- Insert the VersaBuilt **USB drive** into the UR Teach Pendant
- Click on the **Installation Icon** near the top left of the **UR Teach Pendant** then select **URCaps > R2C Config**
- Click on the **Copy USB Files Button**
- Click on the **Update Status Button**
- Confirm Robot2CNC Status: **UP**
- Confirm CNC Status: **IDLE**
- On the CNC, select **program 9000**, place CNC in memory mode and close CNC door
- Press **Cycle Start Test Button**
- Confirm CNC Status: **CNC Cycle Start Test Passed** Note: if any test fails, see Appendix A Troubleshooting



SECTION 5

PROGRAMMING WITH THE Robot2CNC

Before using Robot2CNC each CNC program to be run by Robot2CNC must be modified:

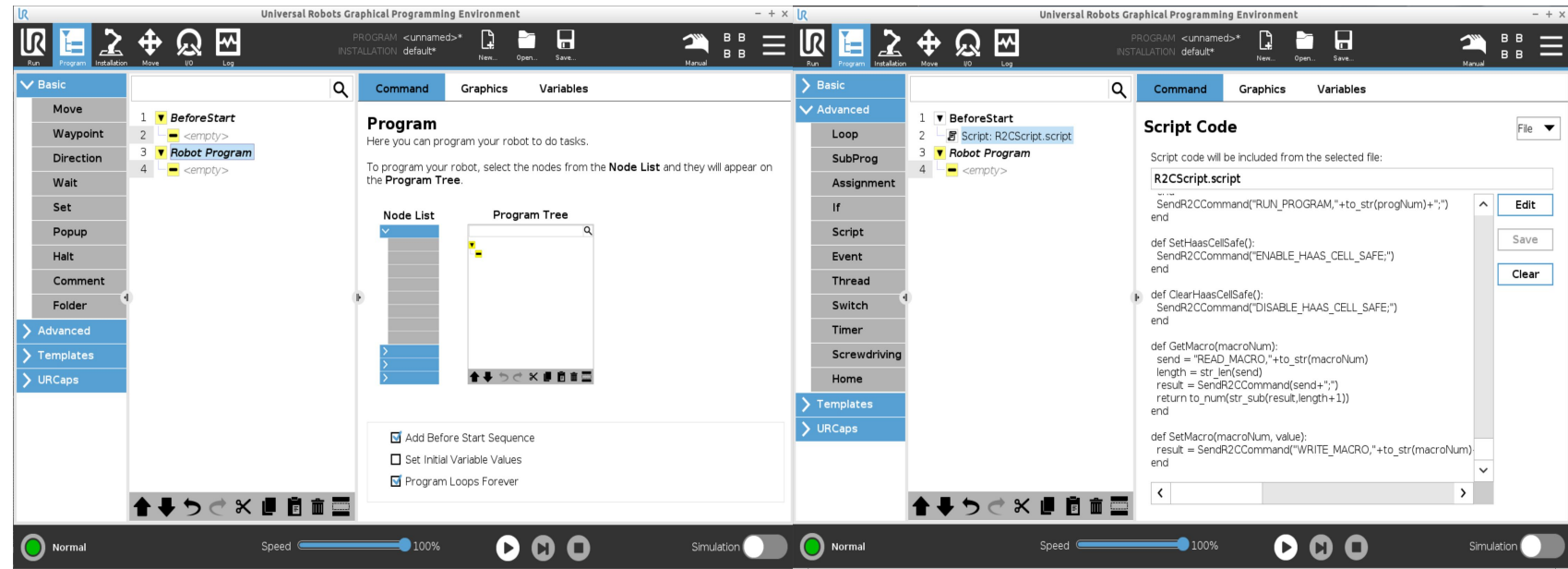
- The included 9004 gcode program sends a handshake signal to the Robot2CNC
- Right before the M30 at the bottom of each CNC program add a line: **M98 P9004**
- The **M98 P9004** is compatible with Robot2CNC or manual execution
- **Tip:** add the **M98 P9004** to your CAM post processor so it is included at the end of all programs
- Example:
- ...
- **M98 P9004**
- **M30**

SECTION 5

PROGRAMMING WITH THE Robot2CNC

Before using Robot2CNC in a UR Polyscope program, the **R2CScript.script** file must be added to the **Before Start** Sequence:

- From the Program page, click on the **Robot Program**
- Click on the **Add Before Start Sequence** checkbox
- Click on the line marked **<empty>** below the BeforeStart
- Click **➤Advance ➤Script**
- In the upper right, select **File**
- Click on the **Edit Button**
- Click the **Open Button** then navigate to the **VersaBuilt** folder and select **R2CScript.script** and press the **Open Button**
- Click the **Exit Button**

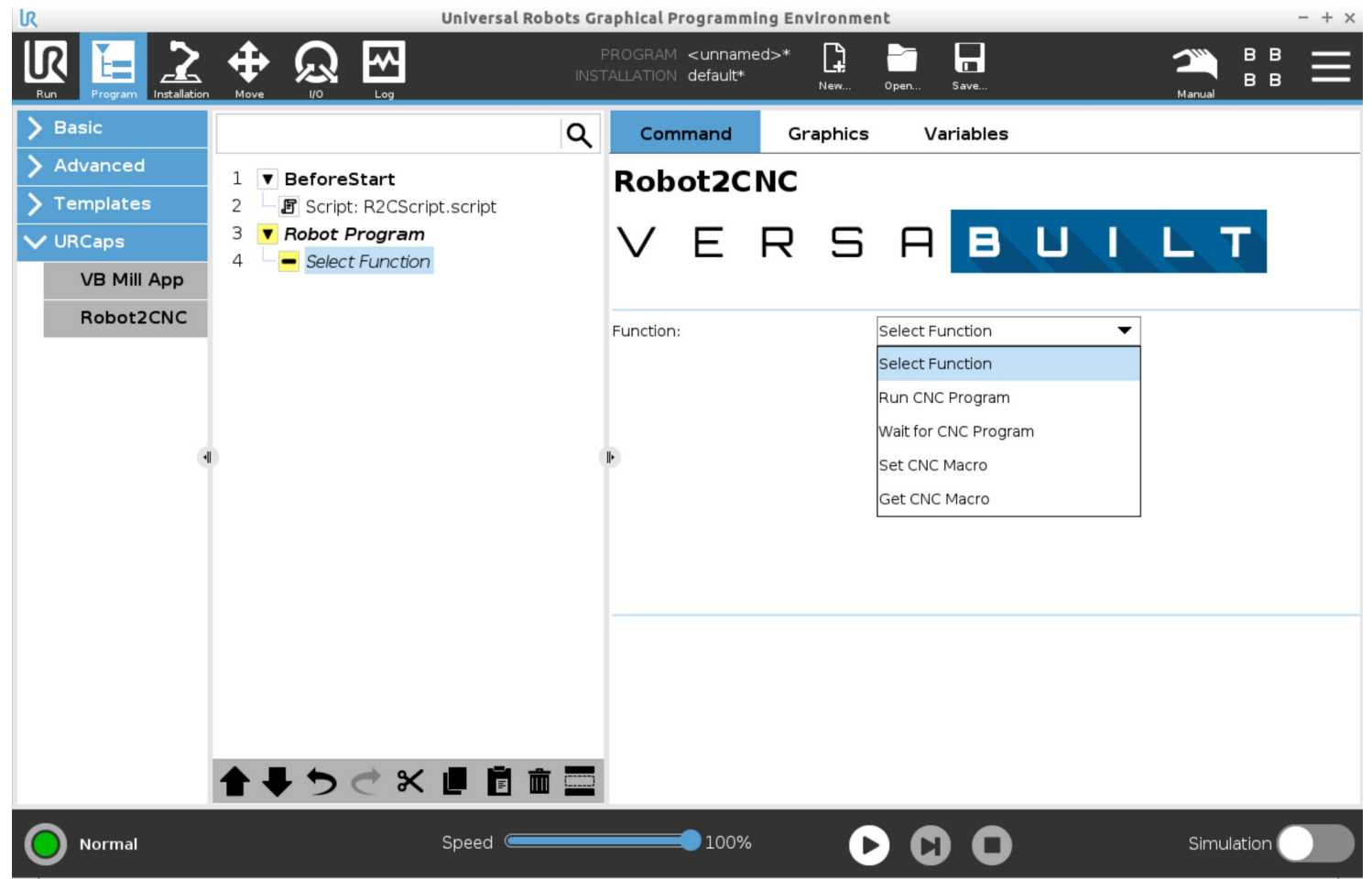


SECTION 5

PROGRAMMING WITH THE Robot2CNC

Robot2CNC commands can be added into the **Polycope** programming tree via the **Robot2CNC program node** accessible in the URCaps section. To add a Robot2CNC command to a program do the following:

- Click on the program tree where the Robot2CNC command is required
- Select **URCaps** **Robot2CNC**
- Click **Select Function**
- Select the required function from the list



Run CNC Program

Runs the CNC program number entered in the CNC Program Number field. CNC program number must be in the CNC memory and the CNC must be in memory mode with the CNC door closed. CNC program completion can be detected with the Wait for CNC Program command.

Optional: Enable Haas Cell Safe Signal

When Enable Haas Cell Safe Signal is checked and the Haas Cell Safe Signal settings have been configured on the Haas CNC, the Robot2CNC will set the Haas Cell Safe signal allowing some CNC programs to function with the CNC door open. See [Appendix C: Enabling Haas Legacy Cell Safe](#)

Wait for CNC Program

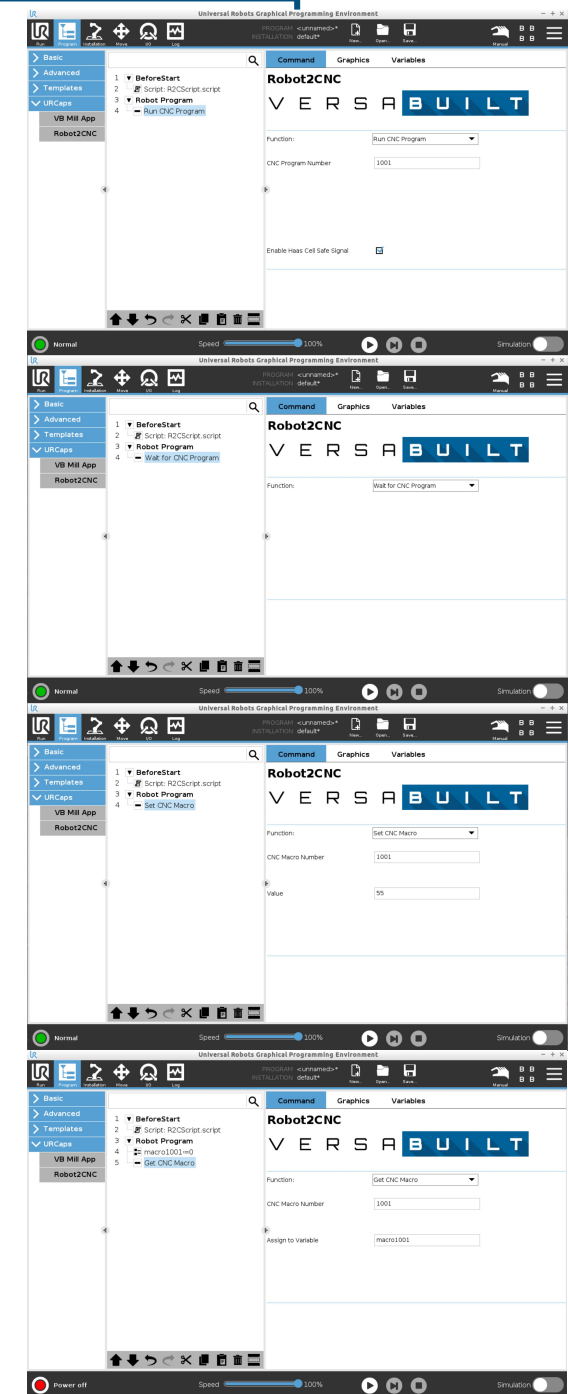
Waits for the currently executing CNC program to complete. If the CNC program completes successfully, Polyscope program execution continues. If an error occurs in the CNC program, a popup message is displayed with information about the error and allowing the operator to stop or continue processing.

Set CNC Macro

Sets the CNC Macro Number entered to the Value entered. The CNC Macro Number parameter must be a valid macro variable number on the Haas CNC control.

Get CNC Macro

Gets the CNC Macro variable specified by the CNC Macro Number parameter and stores it in the Polyscope variable entered in the Assign to Variable parameter. The Assign to Variable must be a valid Polyscope variable, typically created with a Polyscope Assignment program node



Robot2CNC Status: ERROR, Unable to Connect

The UR robot cannot communicate with the Robot2CNC over the Ethernet network. Check the following:

- The link status LED is on for each port of the 5-port Hub with an ethernet cable plugged in
- The IP Address of the robot is set to according to the Step 8 in this manual
- Connect to the Robot2CNC using a portable computer or smart phone and verify Robot2CNC network settings (see Appendix B)

CNC Status: ERROR, Unable to Connect

The Robot2CNC computer cannot communicate with the CNC over the Ethernet network. Check the following:

- Make sure the Robot2CNC Status: Up; CNC Status is not valid until Robot2CNC Status: Up
- The link status LED is on for each port of the 5-port Hub with an ethernet cable plugged in
- The IP Address of the CNC is set properly
- Connect to the Robot2CNC using a portable computer or smart phone and verify Robot2CNC network settings (see Appendix B)

CNC Status: Refused

- The Robot2CNC is able to communicate with the CNC but setting 143 is not properly configured
- Make sure setting 143 Machine Data Collection is set to 9000

CNC Status: CNC State must be IDLE for Cycle Start Test

The CNC is not in a state that allows it to be cycle started. Check the following and try again:

- CNC Door is closed
- CNC is in memory mode, program 9000 is selected and CNC is not alarmed
- Press the reset button

SECTION

1

2

3

4

5

6

Troubleshooting

APPENDIX A

CNC Status: CNC Cycle Start Test failed

Likely causes to the failure:

- The CNC is not in memory mode; verify CNC is in memory mode, retry Cycle Start Test
- 9000 program is not selected; select 9000 program then retry Cycle Start Test
- CNC door is not closed; make sure the CNC door is closed then retry Cycle Start Test
- Cycle Start Wiring problem
 - To confirm wiring problem, press the Cycle Start Test button on the R2C Config URCap page of the teach pendant, then press the Cycle Start button on the CNC within 15 seconds; if the test passes, the wiring problem is confirmed
 - Confirm the Cycle Start Relay wires are secure
 - Put an ohmmeter across the the Cycle Start relay contacts on the Robot2CNC, the contacts should be open
 - While monitoring the Cycle Start Relay contacts with the ohmmeter, have a partner set the press the Cycle Start Test button, the ohmmeter should show a momentary closing of the contacts; if it does not, contact VersaBuilt for warranty exchange of the Robot2CNC

SECTION

1

2

3

4

5

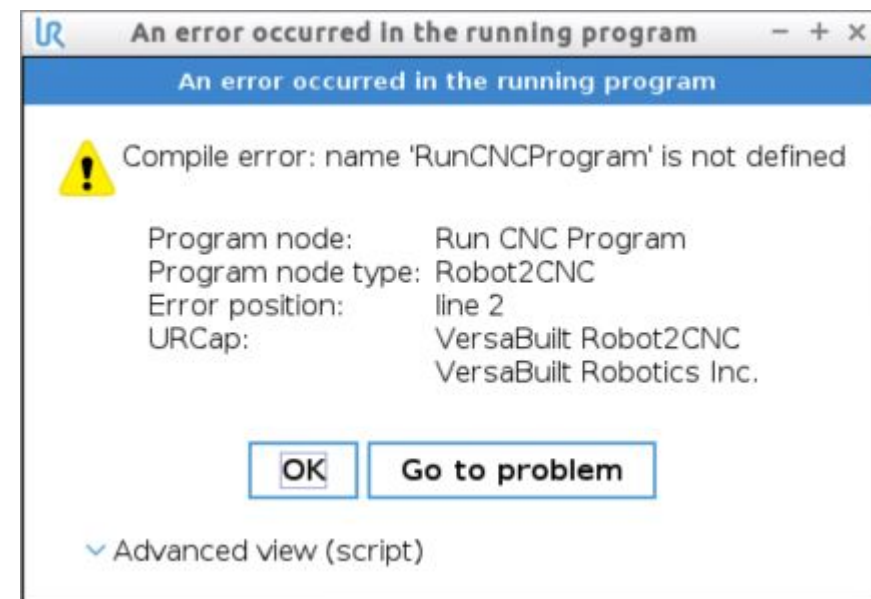
6

Troubleshooting

APPENDIX A

Compile error when running program with Robot2CNC URCap

- The R2CScript.script file has not been added to the Before Start sequence of the UR Polyscope program
- See Section 5 of this manual for instructions on how to add the R2CScript.script file to your program



SECTION 1

2

3

4

5

6

7

8

9

10

11

12

13

14

15

16

17

18

19

20

21

22

23

24

25

26

27

28

29

30

31

32

33

34

35

36

37

38

39

40

41

42

43

44

45

46

47

48

49

50

51

52

53

54

55

56

57

58

59

60

61

62

63

64

65

66

67

68

69

70

71

72

73

74

75

76

77

78

79

80

81

82

83

84

85

86

87

88

89

90

91

92

93

94

95

96

97

98

99

100

101

102

103

104

105

106

107

108

109

110

111

112

113

114

115

116

117

118

119

120

121

122

123

124

125

126

127

128

129

130

131

132

133

134

135

136

137

138

139

140

141

142

143

144

145

146

147

148

149

150

151

152

153

154

155

156

157

158

159

160

161

162

163

164

165

166

167

168

169

170

171

172

173

174

175

176

177

178

179

180

181

182

183

184

185

186

187

188

189

190

191

192

193

194

195

196

197

198

199

200

201

202

203

204

205

206

207

208

209

210

211

212

213

214

215

216

217

218

219

220

221

222

223

224

225

226

227

228

229

230

231

232

233

234

235

236

237

238

239

240

241

242

243

244

245

246

247

248

249

250

251

252

253

254

255

256

257

258

259

260

261

262

263

264

265

266

267

268

269

270

271

272

273

274

275

276

277

278

279

280

281

282

283

284

285

286

287

288

289

290

291

292

293

294

295

296

297

298

299

300

301

302

303

304

305

306

307

308

309

310

311

312

313

314

315

316

317

318

319

320

321

322

323

324

325

326

327

328

329

330

331

332

333

334

335

336

337

338

339

340

341

342

343

344

345

346

347

348

349

350

351

352

353

354

355

356

357

358

359

360

361

362

363

364

365

366

367

368

369

370

371

372

373

374

375

376

377

378

379

380

381

382

383

384

385

386

387

388

389

390

391

392

393

394

395

396

397

398

399

400

401

402

403

404

405

406

407

408

409

410

411

412

413

414

415

416

417

418

419

420

421

422

423

424

425

426

427

428

429

430

431

432

433

434

435

436

437

438

439

440

441

442

443

444

445

446

447

448

449

450

451

452

453

454

455

456

457

458

459

460

461

462

463

464

465

466

467

468

469

470

471

472

473

474

475

476

477

478

479

480

481

482

483

484

485

486

487

488

489

490

491

492

493

494

495

496

497

498

499

500

501

502

503

504

505

506

507

508

509

510

511

512

513

514

515

516

517

518

519

520

521

522

523

524

525

526

527

528

529

530

531

532

533

534

535

536

537

538

539

540

541

542

543

544

545

546

547

548

549

550

551

552

553

554

555

556

557

558

559

560

561

562

563

564

565

566

567

568

569

570

571

572

573

574

575

576

577

578

579

580

581

582

583

584

585

586

587

588

589

590

591

592

593

594

595

596

597

598

599

600

601

602

603

604

605

606

607

608

609

610

611

612

613

614

615

616

617

618

619

620

621

622

623

624

625

626

627

628

629

630

631

632

633

634

635

636

637

638

639

640

641

642

643

644

645

646

647

648

649

650

651

652

653

654

655

656

657

658

659

660

661

662

663

664

665

666

667

668

669

670

671

672

673

674

675

676

677

678

679

680

681

682

683

684

685

686

687

688

689

690

691

692

693

694

695

696

697

698

699

700

701

702

703

704

705

706

707

708

709

710

711

712

713

714

715

716

717

718

719

720

721

722

723

724

725

726

727

728

729

730

731

732

733

734

735

736

737

738

739

740

741

742

743

744

745

746

747

748

749

750

751

752

753

754

755

756

757

758

759

760

761

762

763

764

765

766

767

768

769

770

771

772

773

774

775

776

777

778

779

780

781

782

783

784

785

786

787

788

789

790

791

792

793

794

795

796

797

798

799

800

801

802

803

804

805

806

807

808

809

810

811

812

813

814

815

816

817

818

819

820

821

822

823

824

825

826

827

828

829

830

831

832

833

834

835

836

837

838

839

840

841

842

843

844

845

846

847

848

849

850

851

852

853

854

855

856

857

858

859

860

861

862

863

864

865

866

867

868

869

870

871

872

873

874

875

876

877

878

879

880

881

882

883

884

885

886

887

888

889

890

891

892

893

894

895

896

897

898

899

900

901

902

903

904

905

906

SECTION

1
2
3
4
5
6

Advanced Network Configuration

The default Robot2CNC network configuration is simple and reliable. In some cases it may be desirable for the Robot2CNC to communicate with the Internet and/or the LAN. Advanced Network Configuration can be completed in the Robot2CNC Web Configuration Interface by an experienced network administrator. Keep the following in mind:

- The Robot2CNC and the CNC IP addresses should be static or statically assigned by a DHCP server
- For Remote Support and Software Updates, the Robot2CNC must have access to the Internet
- The Robot2CNC can access the Internet by configuring the built-in Wifi adapter or by connecting the 5-port Hub to a router and configuring the Robot2CNC default gateway and DNS server from the Robot2CNC Web Configuration interface.

